

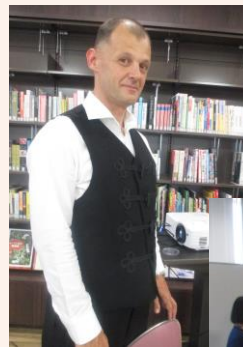


Culture Pot MITO

By our newsletter "Culture Pot MITO,"
we provide useful Information for foreign residents living in Mito.
It is our goal to build a happy and safe community for every citizen
with a different nationality, culture and language.

Contents

- **What is REIWA?**
- **Let's go to**
ADASTRIA MITO ARENA!
- **Be careful of heat stroke!**
- **Leaflets**
Health Insurance,
Municipal and Prefectural Tax,
Festivals around Mito,
Japanese class Info.



▼ Photo: Tea Party on Hungary,
May 25th

Petit Japanese



Sounds of Raining



Potsu-potsu ame ga
ぽつぽつ 雨が
futte iru kana
降っているかな？

It rains a lot in Japan. In June, the rainy season, so called "梅雨", starts.

Japanese use various expressions of raining sounds.

Zaa-zaa ame ga
ざあざあ 雨が
futte imasu
降っています。

When it rains heavily, we say "ざあざあ".

When it rains a little, we say "ぽつぽつ".

Bara-bara
ばらばら
Futte kita
降ってきた

If we get a heavy downfall of rain suddenly, we say "ばらばら"
and if it's not that heavy, we say "パラパラ".

How does the rain sound to you? Please use these expressions.



You can view Culture Pot MITO on your smartphone or tablet.

【Online version】 <https://mitoic.or.jp/en/archive/culture.html>



Events



Approx. 6,000 hydrangea shrubs of 100 species are in bloom.

The 45th Mito Hydrangeas Festival

【When】 Sunday, June 9 – Sunday, June 30, 2019

【Where】 Howa-en (Address: Matsumoto-cho 13-19)



The 59th Mito Komon Festival

Reorganized for anyone to easily participate!

More fireworks and longer hours!

◇ Senbako Fireworks 【When】 Saturday, July 20, 2019, 7:30pm~9:00pm

◇ Main festival (Parades of lanterns, dancers, portable shrines and floats)

【When】 Saturday, Aug 3, 10:00am-10:00pm

◇ Main festival (Parades of portable shrines and floats, Dance festival, etc.)

【When】 Sunday, Aug 4, 10:00am-9:00pm

Trivia



Parades move through the Mito Sta. north main street (Route 50).

Japan's new Imperial era ^{Reiwa} “令和” is named to mean “beautiful harmony” in English. These two Chinese characters were drawn from a passage contained in the nation's oldest poetry anthology ^{Manyoshu} “万葉集,” where they were used with their original meanings. The name also suggests expectations that Japan will be a country where every citizen will be able to make his/her own dream come true, as he/she grows a big beautiful flower.

Information



Children's allowance “Current Situation Report”

If you are the recipient of Child Allowance, you need to submit every year ^{Genkyo-todoke} “現況届” (Current Situation Report) to Mito City. When you receive the form, make sure to return it, completed and stamped with your ^{Inkan} “印鑑,” during the specified period.

WHEN: June 14-28, 2019

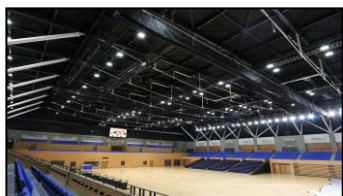
WHERE: “^{Kodomo-ka}子ども課,” Mito City Hall 1F, (TEL: 029-232-9176 [in Japanese only]), or your nearby City branch offices

WHAT: Current Situation Report*, a copy of Recipient's Health Insurance Card**, etc.

* If you were not living in Mito as of 2019/1/1, you need to include your previous address.

** If you are covered by National Health Insurance, you do not need to submit the copy.

Let's go to ADASTRIA MITO ARENA!!



○ Main • Sub Arena

A big sports festival can be held, or small groups can use separately.



● Running Course

1 lap is about 300m. It is located around the Main arena.



○ Tennis Court

There are 6 courts.



● いこいの広場

Place to relax or play around.



○ Multi-purpose Room

Place for dancing or yoga.



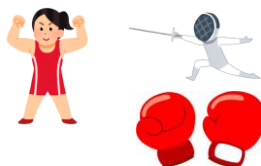
● Training Room

There are various training machines, as well as trainers.



○ Meeting Room

Place for meeting or gathering.



○ Wrestling Room

○ Fencing Room

○ Boxing Room

○ Need reservation / ● No reservation (To use Training Room, need registration at office)

【How to make reservation】 1. At office 2. By phone (水戸市スポーツ振興協会 029-243-0111) 3. By Internet (※Only Sub Arena and Tennis Court. Use 「いばらき公共施設予約システム」)

Open

9:00am-10:00pm
(Tennis Court until 9:00pm)

Closed

• Mondays
(except National Holidays)
• Year End & New Year holiday's

Address • Phone

Mitoshi Midori-cho
水戸市緑町 2-3-10
029-303-6335

	Facility Name	Category of Sports	Per 1 hour
Fee	Main Arena	Basketball (1 Surface)、Volleyball (1 Surface)	1,360 yen
	Sub Arena	Badminton (1 Surface)	340 yen
	Multi-purpose/ Meeting Room	(Dividable into four) A quarter room	340 yen~
	Tennis Court	1 Surface	350 yen
	Training Room		200 yen
	Running Course		Free
	Boxing Room		680 yen
	Fencing Room		
	Wrestling Room		

【Access (Bus)】

Bus stop	Mito Sta. North exit bus stop 5	Akatsuka Sta. North 1, South 2
Destination	Shinbara-keiyu Ibadaimae i ki Akatsuka-homen i ki Futabadai-homen i ki Akatsukaeki i ki 新原経由・茨大前行き/赤塚方面行き/双葉台方面行き/赤塚駅行き	Mitoeki i ki 水戸駅 行き
Get off Place	Daikumachi Sanchome 大工町 三丁目⇒Walk 6 mins.	Higashihara 1-chome 東原 一丁目⇒Walk 4 mins.

Health Insurance

Every person who lives in Japan needs to join a health insurance program. Foreign nationals, residing in Japan exceeding three months as below, are also required to do so.

◇Medium to Long Term Residents

(basically, those with a visa of more than three months duration, such as students from overseas, company employees, technical intern trainees, those who are married to Japanese, Japanese descents, permanent residents, etc.)

◇Special Permanent Residents

◇Persons granted permission for temporary refuge or provisional stay

◇Persons within 60 days of having lost Japanese nationality (= persons entitled to stay in Japan transitionally)

◇Babies within 60 days of birth

Newly born babies should also join a health insurance program. Please apply soon after birth.

Having a health insurance means...

- You will need to pay premiums.
- The insurance will cover a large portion (70 to 90%) of your medical fee in case of illness and injury.

Types

(1) National Health Insurance (NHI)

(2) Health insurance of the company that you or your spouse works for.

If you are not enrolled in your company's health insurance program (2), sign up for NHI (1).

Application for National Health Insurance

Mito City Hall “Kokuho nenkin-ka 国保年金課, Kokuh o ze i-gakari 国保税係” TEL: 029-232-9526

WHERE: Hon chosha 本庁舎 1F (Address: Mitoshi chuo 水戸市 中央 1-4-1)

【Payment procedure】

When you receive this year's tax notice (Nozei-Tsuchisho 納税通知書) in mid-July, you should take this tax notice to bank counters or convenience stores and pay your tax.

【Payment deadlines】

The yearly amount of tax is separated into eight payments, each with a deadline as follows.

- ① **July 31** ② **Sept. 2** ③ Sept. 30 ④ Oct. 31 ⑤ Dec. 2
⑥ Dec. 25 ⑦ Jan. 31 (2020) ⑧ Mar. 2 (2020)

 There will be overdue charges if you miss the deadlines.

Automatic deduction service

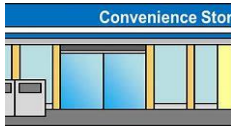
If you wish to have the tax deducted automatically from your bank account, follow the direction written on the reverse page (Municipal and Prefectural Tax).

Municipal and Prefectural Tax

If the address shown on your residence card is **Mito City** as of January 1, 2019, you are required to pay the **Municipal and Prefectural Tax** (often called ^{Jumin-zei}住民税 = resident tax) for the year to Mito City.

The amount of payment depends on your net income (^{Shotoku Kingaku}所得金額) of 2018.

【Payment procedure】



In mid-June, you will receive this year's tax notice (^{Nozei Tsuchisho}納税通知書). You should take this tax notice to bank counters or convenience stores and pay your tax.

【Payment deadlines】

Payment is to be made four times in total, each with a deadline as follows.

- ① **July 1** ② **Sept. 2** ③ Oct. 31 ④ Jan. 31 (2020)



There will be overdue charges if you miss the deadlines.

Automatic deduction service: You can choose to have the tax deducted automatically from your bank account. Take the tax notice, your bank passbook and your personal seal (^{Inkan}印鑑) (one that you used upon creating the account) to the bank counter, and fill out necessary documents.

Leaving Japan? : If you are planning to leave Japan, consult Mito city office's ^{Shiminzei-ka}“市民税課” as you will need to decide how to complete the payments.
(See below for contact number.)

※Those who are currently employed

Have a look at your pay slip; if there is any deduction in the name of ^{Jumin-zei}住民税 or ^{Shimin-zei}市民税, it means that the company is collecting 1/12 of your annual resident tax every month starting from June 2019 and ending in May 2020. In such a case, your resident tax is paid to the government via your company, so you do not need to make payment by yourself.

Department in charge: Mito City Hall “^{Shiminzei-ka}市民税課” (TEL: 029-232-9138)

WHERE: ^{Hon chosha}本庁舎 2F (Address: ^{Mito-shi}水戸市 ^{Chuo}中央1-4-1)

※ Please note the contact numbers shown here are available only in Japanese, as well as the office procedures.

Summer Festivals around Mito 2019

Mito Komon Matsuri
●水戸黄門 まつり

Mito Parades of Lanterns, Decorated floats,
Portable shrines, Latin dancers, etc.,
and much more to enjoy!

Date / August 3rd (Sat) ~ August 4th (Sun)

Place / ^{Mitoeki Kitaguchigawa Odori}水戸駅 北口側 大通り

Contact / ^{Mito Kanko Convention Kyokai}水戸 観光 コンベンション 協会

TEL / 029-224-0441



Ishioka no Omatsuri Hitachi-no-Kuni So sha gu Rei tai sai
●石岡のおまつり (常陸国総社宮例大祭)

Ishioka Decorated floats, Sumo performance,
^{Kagura Miko-mai Shishi-mai}神楽/巫女舞/獅子舞 (Various dances
dedicated to Gods), etc.

Date / September 14th (Sat) ~ 16th (Mon)

Place / ^{Hitachi-no-kuni So sha gu}常陸国総社宮

(Add / ^{Ishioka-shi Sosha}石岡市総社2-8-1)

TEL / 0299-22-2233

HP / <http://www.sosyagu.jp/index.php>



[Kasama city]

Kasama no matsuri
●笠間のまつり (Late August)

<https://www.city.kasama.lg.jp/index.html>

[Tsukuba city]

Matsuri Tsukuba
●まつりつくば (Aug. 24th, 25th)

<https://www.matsuri-tsukuba.com/>



Please make sure to
confirm the Festival and
Firework schedules before
you go.

Fireworks Festivals around Mito 2019

Mito Komon Matsuri Hanabi-Taikai
●水戸黄門まつり 花火大会

Mito 【4,500 fireworks】

Date / July 20th (Sat)

7:30pm-9:00pm

Place / ^{Senbako}干波湖 Lake

Contact / ^{Mito Kanko Convention Kyokai}水戸 観光 コンベンション 協会

TEL / 029-224-0441



Tokai Matsuri Hanabi-Taikai
●東海まつり 花火大会

Tokai 【2,000 fireworks】

Date / August 11st (Sun)

7:00pm-8:30pm

Place / ^{Akogigaura Koen}阿漕ヶ浦 公園 Park

Contact / ^{Tokai Matsuri Jikko-iinkai}東海まつり 実行委員会

TEL / 029-283-2141



Nakaminato Kaijo Hanabi-taikai
●那珂湊 海上 花火大会

Hitachinaka 【1,600 fireworks】

Date / August 8th (Thu)

7:00pm-8:30pm

In case of rain / August 9th (Fri)

Place / Nakaminato fishing port

Contact / ^{Nakaminato Kaijo Hanabi-taikai Jikko-iinkai}那珂湊 海上花火大会 実行委員会

TEL / 029-263-7811



Hitachinaka Matsuri Hanabi-taikai
●ひたちなか祭り 花火大会

Hitachinaka 【3,000 fireworks】

Date / August 17th (Sat)

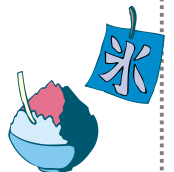
7:00pm-8:30pm

In case of rain / August 19th (Mon)

Place / Ground Self-Defense Force Camp Katsuta

Contact / ^{Hitachinaka Matsuri Jikko-iinkai}ひたちなか祭り 実行委員会

TEL / 029-273-0540



Mitoshi Uchihara Shoko Natsu-matsuri Hanabi-Taikai
●水戸市 内原 商工 夏まつり 花火大会

Mito 【700 fireworks】

Date / August 17 (Sat) 7:30pm-

Place / ^{Uchihara}内原Sta. North exit, ^{Deai no Hiroba}出会の広場 ^{Koen}公園

(Next to AEON mall Mito-Uchihara)

Contact / ^{Mitoshi Uchihara}水戸市 内原 ^{Shokokai}商工会 ^{Seinenbu}青年部

TEL / 029-259-2803

Naka Himawari Festival
●なか ひまわり フェスティバル 2019

Naka 【800 fireworks】

Date / August 24st (Sat)

7:00pm-

Place / ^{Naka Sogo Koenpark}那珂 総合公園park

Contact / ^{Naka Himawari Festival}なか ひまわり フェスティバル ^{Jikko-iinkai}実行委員会

TEL / 029-298-1111



Japanese Classes held in Mito International Center

will resume from September

Day	Name of Group	Class Levels	Last Class	First class
Tue	Orbis	Beginner, Intermediate, Conversation, Hiragana, Kanji	Jul. 30	Sep. 3
Wed	Friendly Neighborhood	Beginner, Upper Intermediate	Jul. 17	Sep. 11
	MESA Friendship	Kanji, Hiragana, Katakana, Simple Daily Conversation	Jul. 17	Sep. 11
Thu	Sophia	Beginner, Beginners Intermediate	Jul. 18	Sep. 5
Fri	MESA Friendship	Beginner, Upper Intermediate	Jul. 19	Sep. 6
Sat	L'avenir	Beginner, Intermediate, Advanced	Jul. 27	Sep. 7

gatsu
6月 JUNE

日	月	火	水	木	金	土
SUN	MON	TUE	WED	THU	FRI	SAT
						①
2	3	④	⑤	⑥	⑦	⑧
9	10	⑪	⑫	⑬	⑭	⑮
16	17	⑱	⑲	⑳	㉑	㉒
23	24	㉕	㉖	㉗	㉘	㉙
30						

gatsu
7月 JULY

日	月	火	水	木	金	土
SUN	MON	TUE	WED	THU	FRI	SAT
	1	②	③	④	⑤	⑥
7	8	⑨	⑩	⑪	⑫	⑬
14	15	⑰	⑱	⑲	⑳	㉑
21	22	㉓	24	25	26	㉗
28	29	⑳	31			

gatsu
9月 SEPT.

日	月	火	水	木	金	土
SUN	MON	TUE	WED	THU	FRI	SAT
1	2	③	4	⑤	⑥	⑦
8	9	⑩	⑪	⑫	⑬	⑭
15	16	17	⑱	⑲	⑳	㉑
22	23	24	㉕	㉖	㉗	㉘
29	30					

○ Class open

■ No class

Be careful of heat stroke! 



What is heat stroke?

You can easily get heat stroke in summer.

The symptoms include dizziness and nausea, and it could even cause unconsciousness.

Pay special attention when

- The temperature and humidity is high. (You could even get a heat stroke indoor or at night)
- The temperature rises suddenly.

How to help prevent heat stroke

- Make sure to drink water often and take salt when you sweat a lot.
- Shield yourself from strong sunlight. (Use a parasol or wear a hat.)



If you get heat stroke

- Move to a cool place and cool your body down.
- Drink water or sports drink and take salt.

Convenient goods for preventing heat stroke

- Salt tablet...You can easily take salt anytime, anywhere.
- Cool towel...Towel gets cool when you wet it with water.



Be careful of heat stroke and have a good summer!

Mito City International Association (MCIA)
Tuesday-Sunday, 9am-9pm
 (Closed : Mondays, **National Holidays**)

Add 〒310-0024 Mito-shi Bizen-machi 水戸市 備前町6-59
 Mito International Center


Tel 029-221-1800
 Fax 029-221-5793
 Email mcia@mito.ne.jp
 HP <https://mitoic.or.jp>

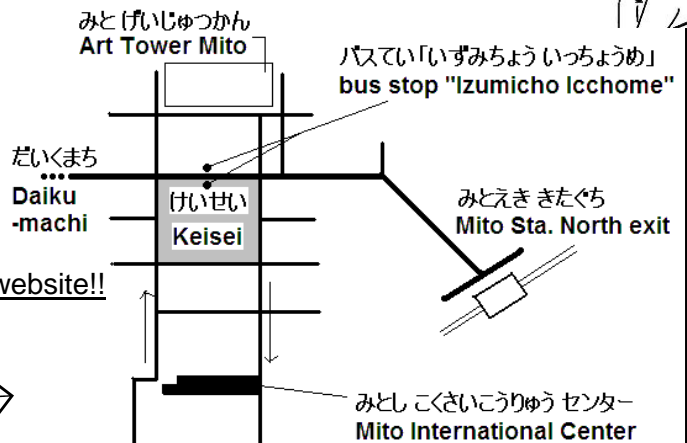


Our website!!

Please forward us any opinions or suggestions you may have!



Feel free to drop by! 



Take a bus from Mito station North exit, bus terminal #4~7 ⇒ 5mins ⇒ ♀ “泉町一丁目” Izumicho Icchome